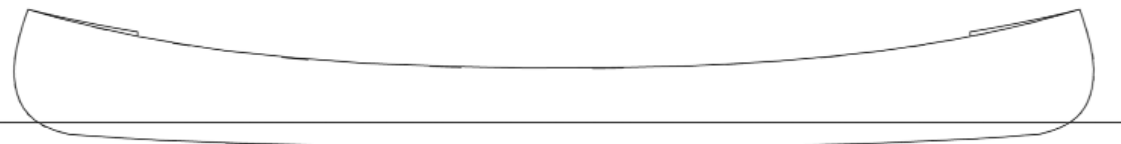
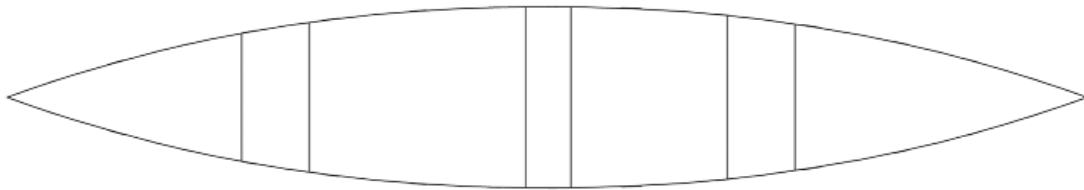
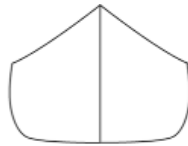


## NEREIDE 480

The NEREIDE represents the classical canoe used on the lakes and rivers of North America which, for almost the last two centuries, has been built with very slight differences in design, which is in itself a guarantee of quality. Rather wide at waterline, it is stable and may transport, besides a crew of 2 or 3 people, even baggage and equipment. It is suitable for long, quiet excursions rather than for fast trips. The streamline and bent prow allows it

to tackle rough waterways and small rapids. The canoe is perfectly symmetrical to the main section, thus it may proceed well in both directions. The construction is carried out in strip planking, which is particularly suitable for this type of boat. It is not very easy and requires considerable working time. However, those who realize a boat of this kind, normally care for and look for a high quality product, with aesthetic properties, dedicating all the time necessary for its realization.



hull	ROUND	length OA	m 4,78	PLANS n° 9 sheets A3 - building instructions - material list
skills requested	LITTLE EXPERIENCE	deck beam	m 0,80	
construction method	STRIP PLANKING	displacement	kg 30	